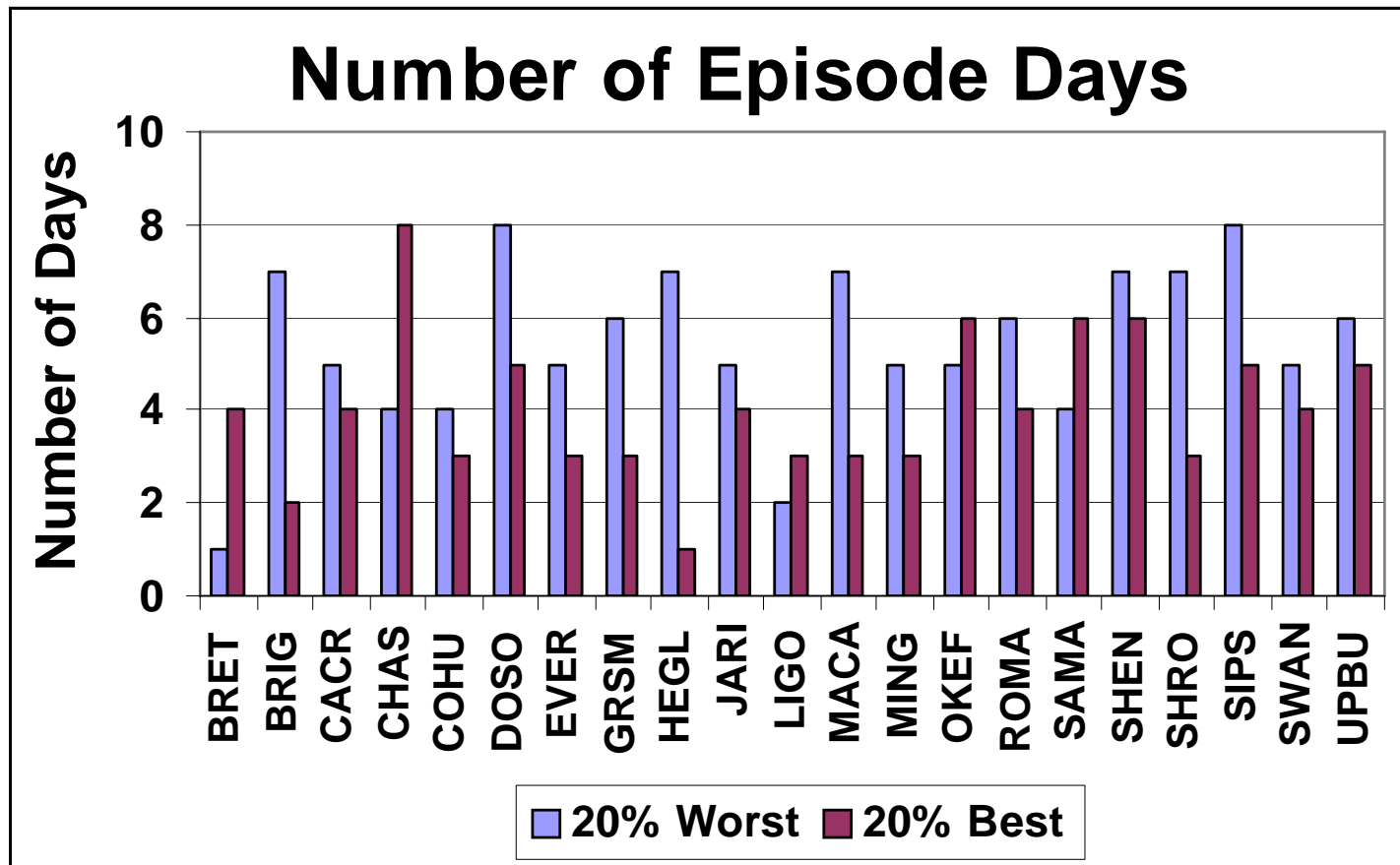


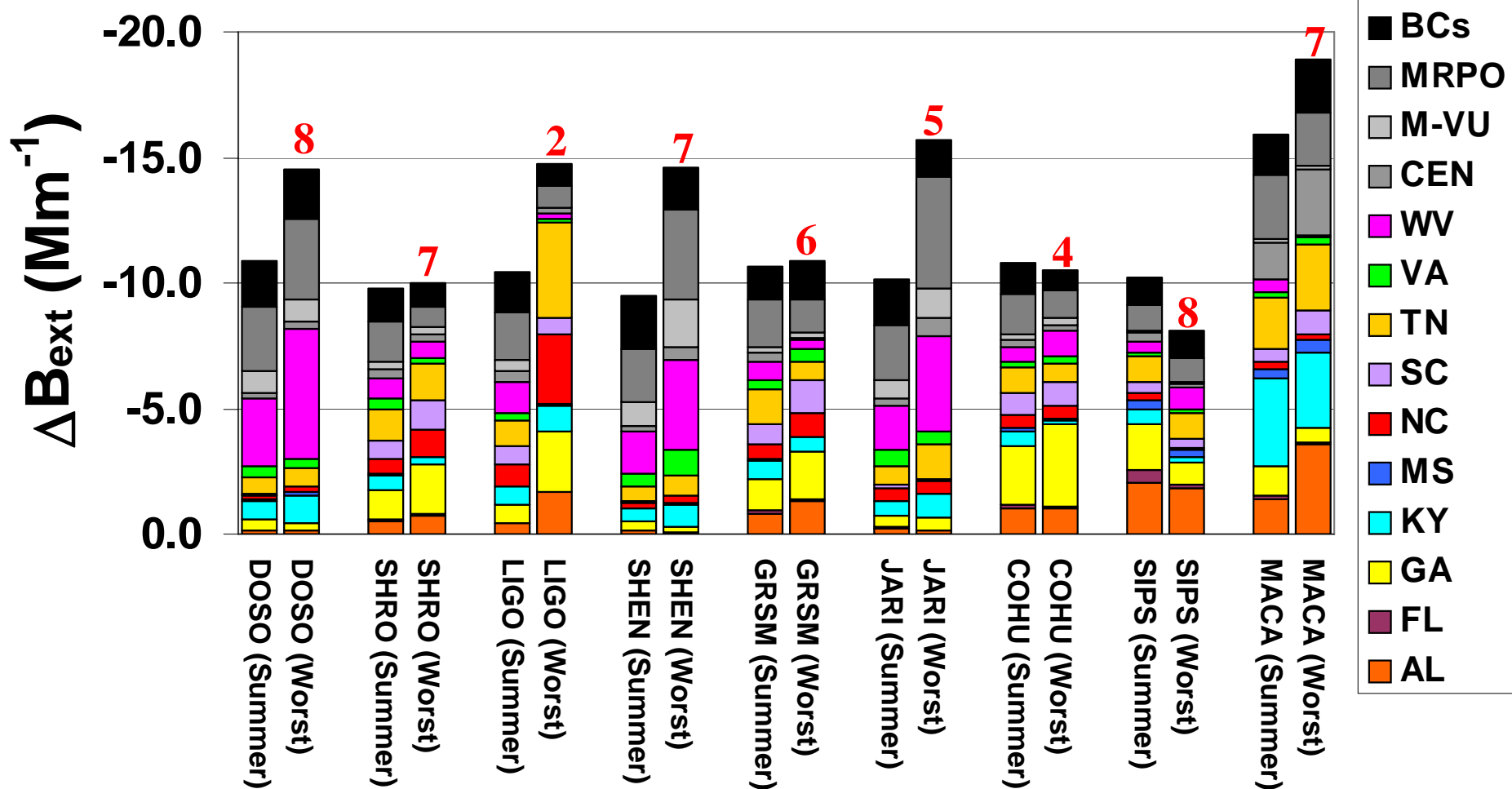
Weights for Class I Areas

- Previously, results presented as summer episode average (39 days) and winter episode average (29 days)
- Now, equal weights given to each 20% Worst and Best Day



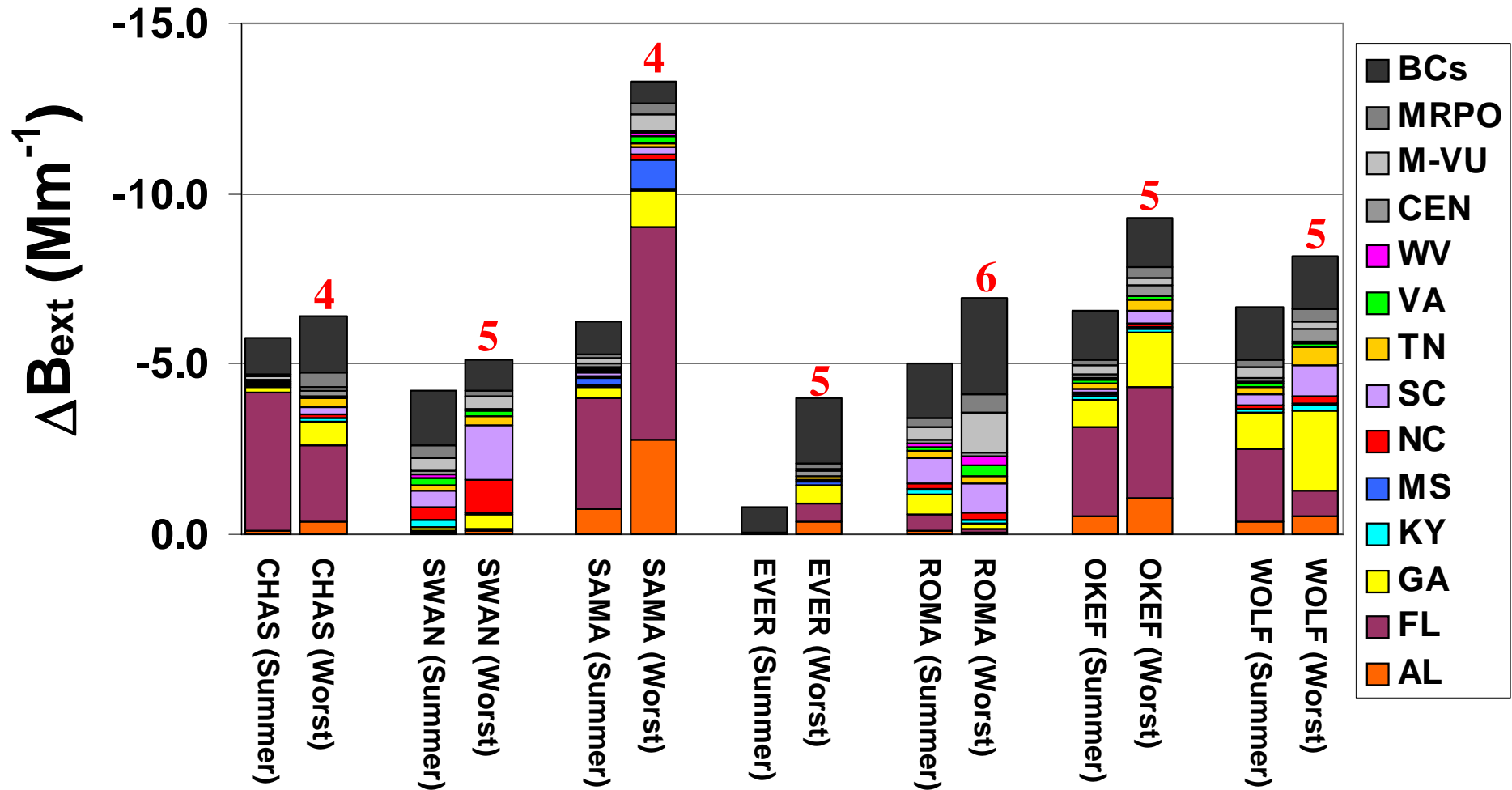
30% EGU SO₂ Sensitivity

Mountain Sensitivities



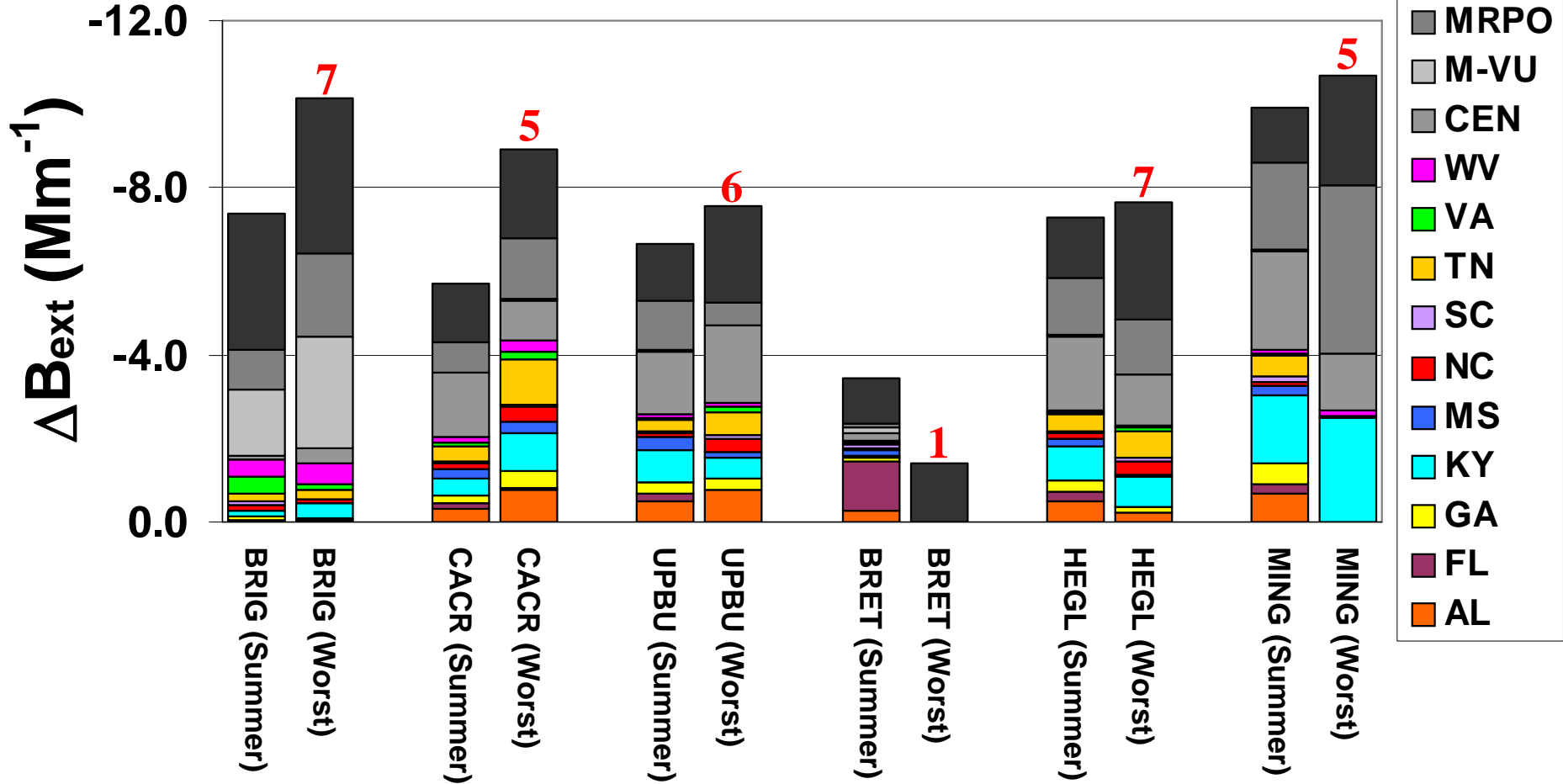
30% EGU SO₂ Sensitivity

Coastal Sensitivities



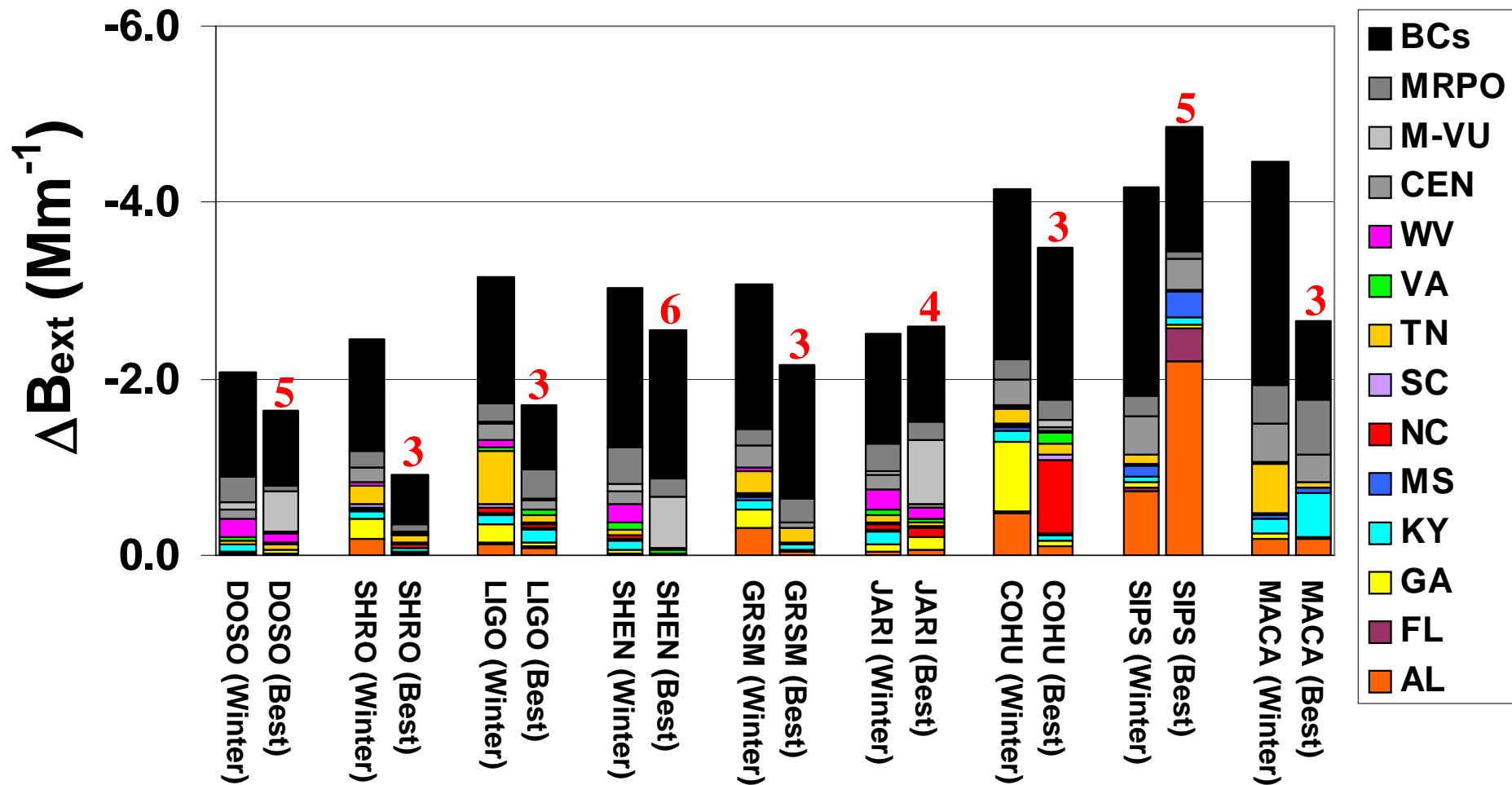
30% EGU SO₂ Sensitivity

Non-VISTAS Sensitivities



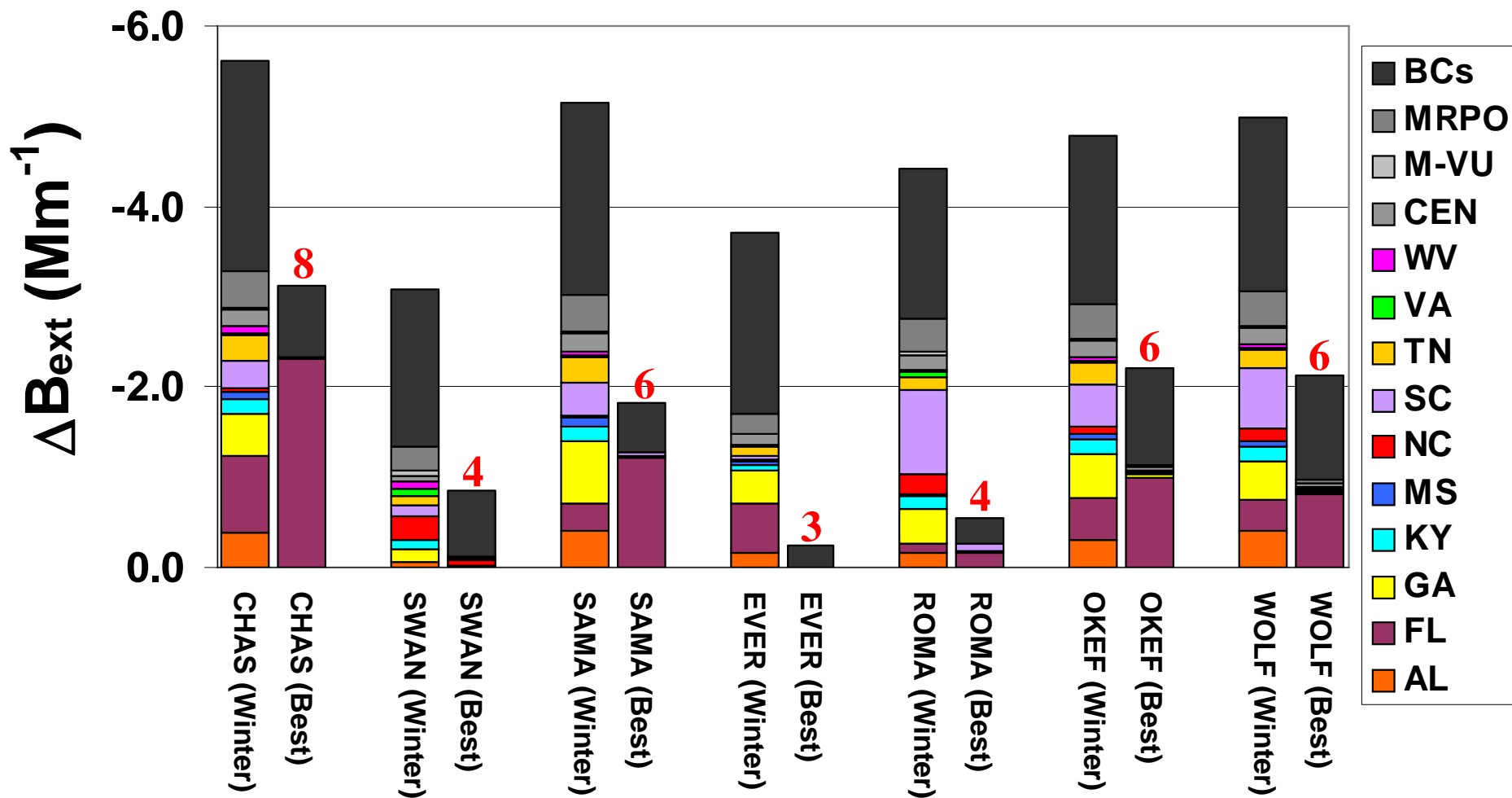
30% EGU SO₂ Sensitivity

Mountain Sensitivities



30% EGU SO₂ Sensitivity

Coastal Sensitivities



30% EGU SO₂ Sensitivity

Non-VISTAS Sensitivities

